



ShoreGear SIP-BRI 8

Quick Start Guide



Document and Software Copyrights

Copyright © 1998–2006 by ShoreTel, Inc., Sunnyvale, California, U.S.A. All rights reserved. Printed in the United States of America. Contents of this publication may not be reproduced or transmitted in any form or by any means, electronic or mechanical, for any purpose, without prior written authorization of ShoreTel, Inc.

ShoreTel Inc. reserves the right to make changes without notice to the specifications and materials contained herein and shall not be responsible for any damage (including consequential) caused by reliance on the materials presented, including, but not limited to, typographical, arithmetic, or listing errors.

Trademarks

The term ShoreGear SIP-BRI 8 is a trademark of ShoreTel. All other trademarks presented in this document are the property of their respective owners. ShoreCare, ShoreWare, and ShoreGear are registered trademarks of ShoreTel, Inc. in the United States and/or other countries. ShoreTel, ShoreTel 6, ShorePhone, Office Anywhere and ShoreTel Smart, are Trademarks of ShoreTel, Inc. in the United States and/or other countries.

WEEE Information

In accordance with the requirements of council directive 2002/96/EC on Waste of Electrical and Electronic Equipment (WEEE), ensure that at end-of-life you separate this product from other waste and scrap and deliver to the WEEE collection system in your country for recycling.

FCC Interference Statement

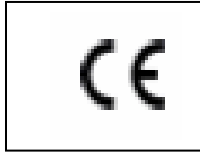
If equipment has been purchased from ShoreTel, this equipment has been tested and found to comply with the limits for a Class B digital device pursuant to Part 15 of the FCC rules. These limits are designed to provide reasonable protection against radio interference in a commercial environment. This equipment can generate, use and radiate radio frequency, energy and, if not installed and used in accordance with the instructions in this manual, may cause interference with radio communications.

Company Information

ShoreTel 960 Stewart Drive, Sunnyvale, California USA +1.408.331.3300 +1.408.331.3333 (Fax)

Contents

1.0	Power up the ShoreGear SIP-BRI 8	5
2.0	Configure the IP connectivity	6
2.1	Static IP addressing environment.....	6
2.2	Dynamic IP addressing environment.....	11
3.0	Configure the SIP trunk.....	16
3.1	Configuring the ShoreGear SIP-BRI 8.....	16
3.2	Configuring the ShoreGear voice switch	18
4.0	Configure the BRI trunks.....	24
5.0	Final step : remote maintenance setup.....	26
6.0	Additional Information	27



Approval

—This device is approved for connection to the public ISDN telecommunication network, over BRI/S0-ISDN interfaces.

Zulassung

—Zugelassen für die Anschaltung an das öffentliche ISDN Telekommunikationsnetz an BRI/S0-ISDN Schnittstellen.

Aprobación

—Este aparato está aprobado para conexión a red pública ISDN sobre interfaz BRI/S0.

Agrément

—Cet appareil est approuvé pour la connexion au réseau RNIS public avec les interfaces BRI/S0.



• The ShoreGear SIP-BRI 8 contains no user serviceable parts. The equipment shall be returned to ShoreTel for repairs, or repaired by qualified service personnel only.

• **Mains Voltage:** Do not open the case when the power cord is connected. For systems without a power switch, line voltages are present within the power supply when the power cord is connected. The mains outlet that is utilized to power the ShoreGear shall be within 10 feet (3 meters) of the device, shall be easily accessible, and protected by a circuit breaker.

• For AC powered units, ensure that the power cable used meets all applicable standards for the country in which it is to be installed, and that it is connected to a wall outlet which has earth ground.

• Do not work on the system or connect or disconnect cables during periods of lightning activity.

1.0 Power up the ShoreGear SIP-BRI 8

1. Connect the ShoreGear to the mains (AC) power source with the power cable.
2. Wait until the Power LED stops blinking and remains constantly lit. Now the ShoreGear is ready to configure.

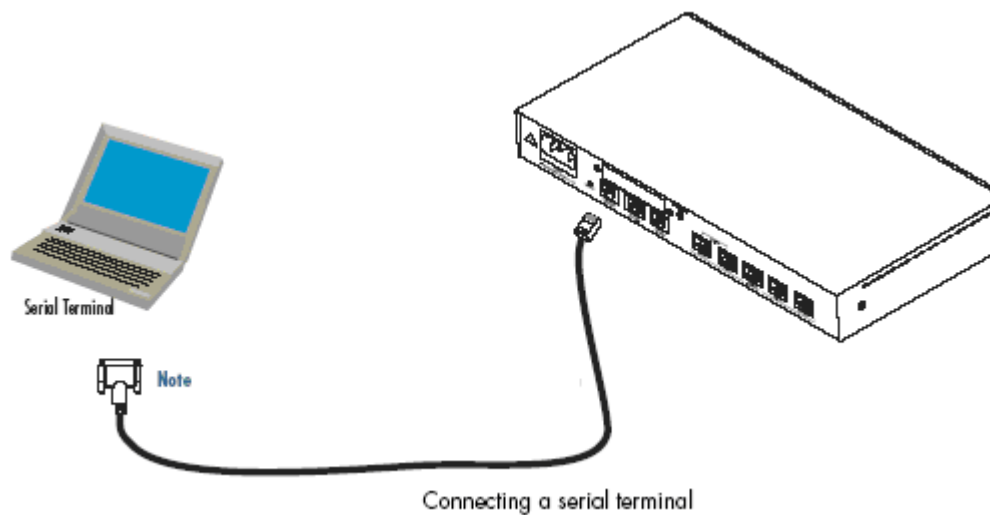
2.0 Configure the IP connectivity

2.1 Static IP addressing environment

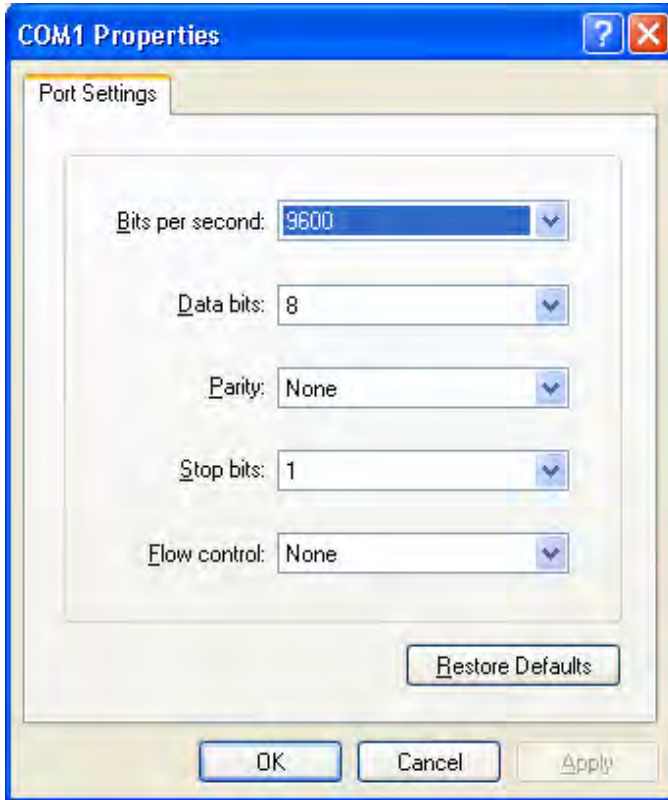
1. In the situation where no DHCP server is present on the network, connect the serial cable provided with the unit on a COM port of your PC and run any terminal emulation (HyperTerminal or Tera Term provided in the documentation CD under the tools section).



The interconnecting cables shall be acceptable for external use and shall be rated for the proper application with respect to voltage, current, anticipated temperature, flammability, and mechanical serviceability.

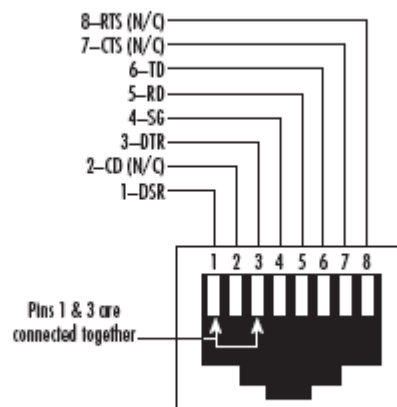


- Set the terminal connection properties as follows:



Bits per second : **9600**
Data bits : **8**
Parity : **None**
Stop bits : **1**
Flow Control: **None**

Console port



EIA-561 (RJ-45 8-pin) port

Note N/C means no internal electrical connection.

3. Press **Return** to display the CLI login screen.

4. Assign the IP address by following these steps:

a. Login and entering the configuration mode:

```
login: admin<Enter>
password:changeme<Enter>
192.168.1.1>
192.168.1.1>enable
192.168.1.1#configure
192.168.1.1(cfg)#
192.168.1.1(cfg)# context ip router
192.168.1.1(ctx-ip)[router]#
192.168.1.1(ctx-ip)[router]#interface eth0
192.168.1.1(if-ip)[eth0]#
```

b. Set your IP address and network mask for the interface ETH 0/0(WAN). In this example a network 172.16.1.0/24 is assumed. The IP address in example is set to 172.16.1.99.

```
192.168.1.1(if-ip)[eth0]#ipaddress 172.16.1.99 255.255.255.0
172.16.1.99(if-ip)[eth0]#
```

c. Copy this modified configuration to your new start-up configuration. This will store your changes in nonvolatile memory. On the next start-up the system will initialize itself using the modified configuration.

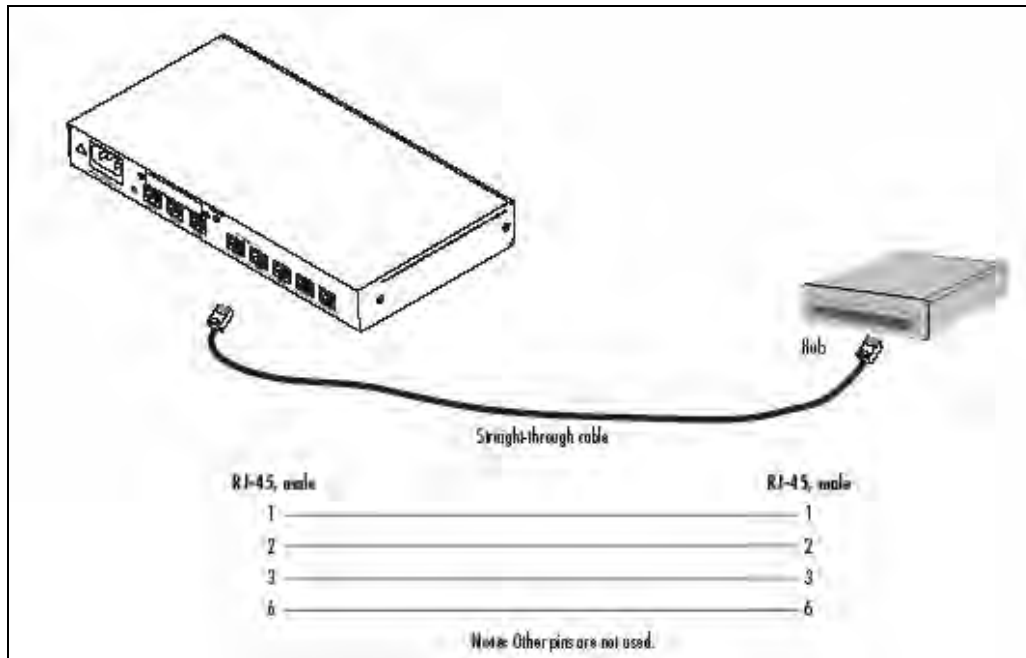
```
172.16.1.99 (if-ip)[eth0]#copy running-config startup-config
```

5. Connect the ShoreGear SIP-BRI 8 Eth0/0 port to the LAN.

Ethernet devices (10Base-T/100Base-T) are connected to the ShoreGear SIP-BRI 8 over a cable with RJ-45 plugs. The Ethernet 0/0 port is Auto-MDX use any straight or crossover cable to connect to hubs, switches, PCs or other devices.



Typical Ethernet straight-through cable diagram The interconnecting cables shall be acceptable for external use and shall be rated for the proper application with respect to voltage, current, anticipated temperature, flammability, and mechanical serviceability.

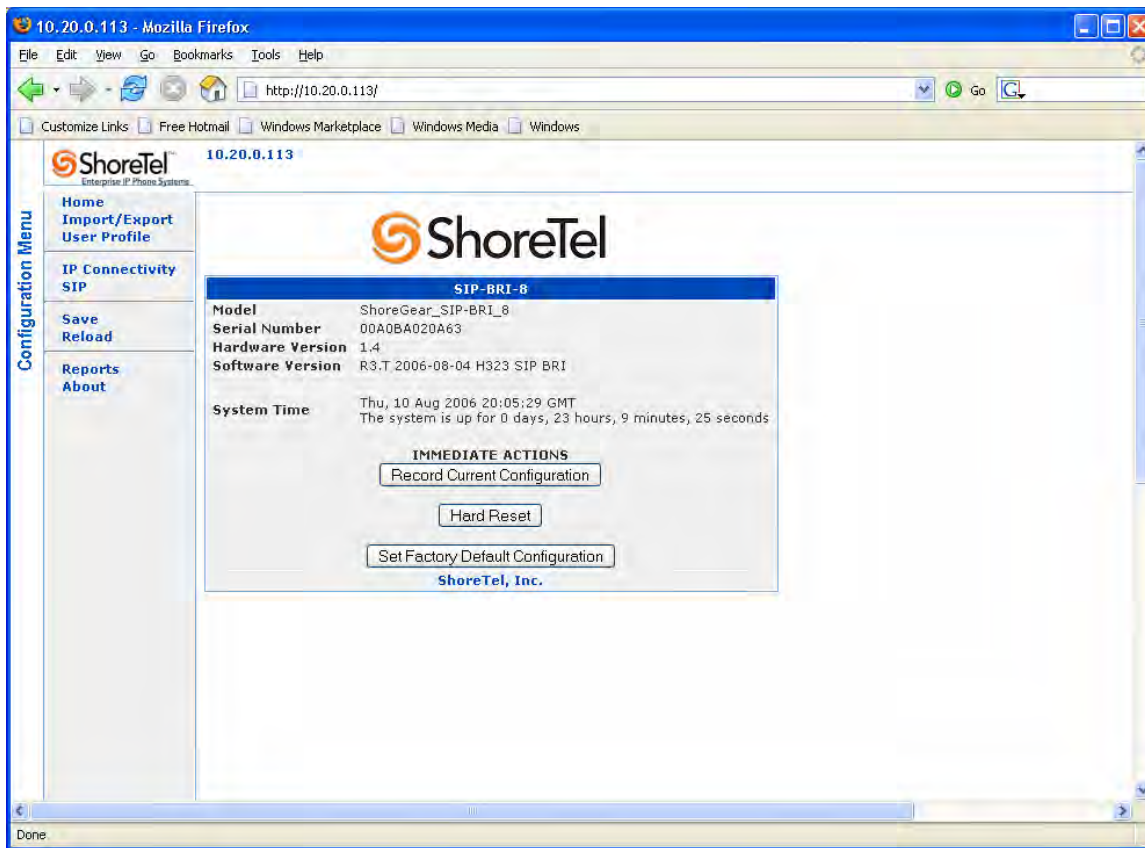


Launch a browser window from a PC that is connected to the same LAN as your ShoreGear SIP-BRI 8 and enter the IP Address you have just assigned as the URL.

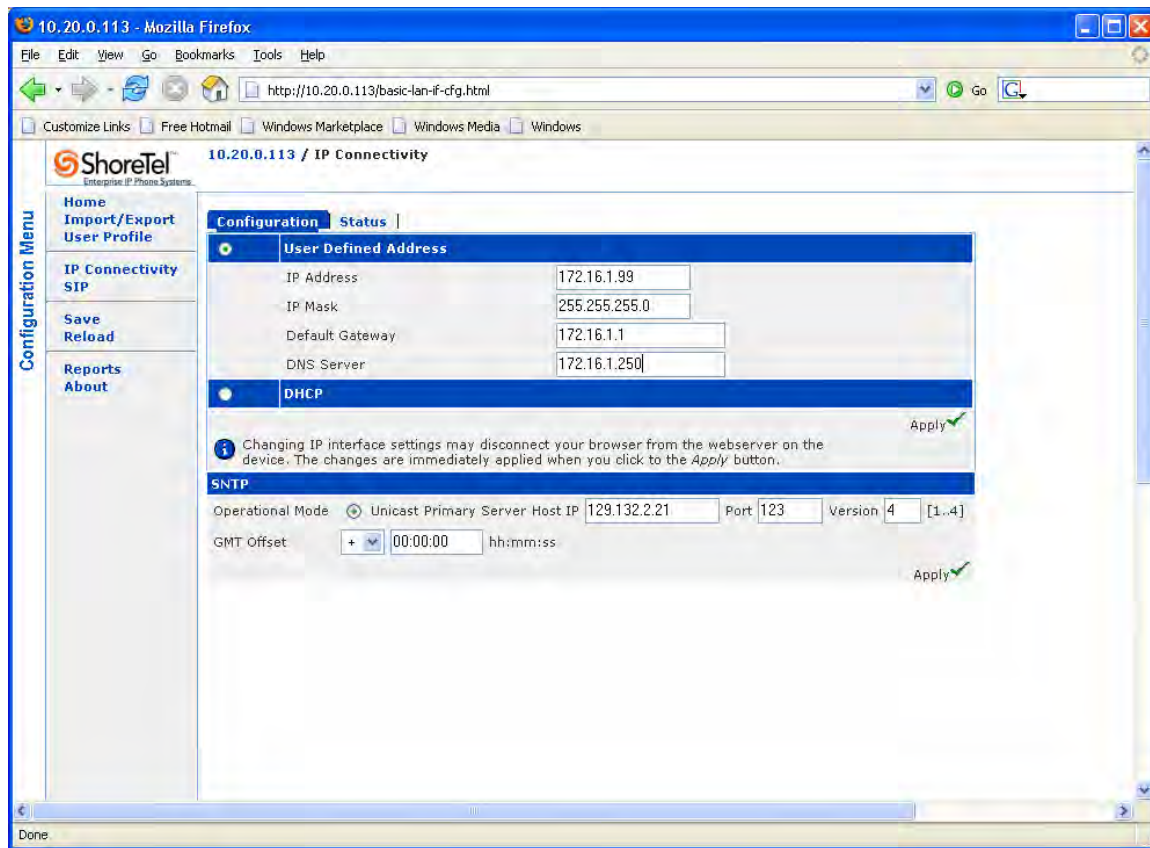
Input the default login/password:

Login: **admin**
Password: **changeme**

Note: The default password should be changed right away (as suggested by the default settings) for ensuring secure access into the unit. This can be easily done via accessing the User profile menu in the left column of the graphical user interface.



6. Access the "IP CONNECTIVITY" menu on the main page of the graphical user interface. The ShoreGear SIP-BRI 8 will present you with the following screen where you can input the static IP information..



Note: The SNTP field is already populated but you can choose to enter a different value if desired.

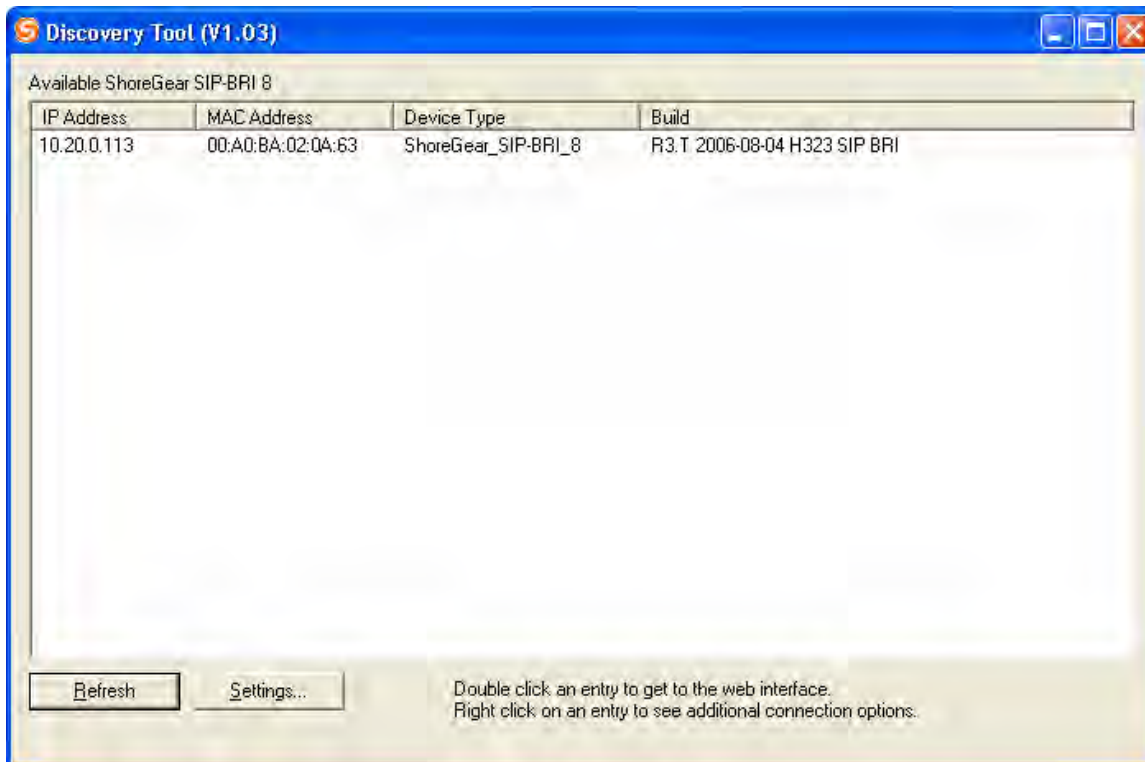
2.2 Dynamic IP addressing environment

1. Connect the ShoreGear SIP-BRI 8 Eth0/0 port to the LAN.

Note: The Eth0/1 port is disabled and reserved for later use.

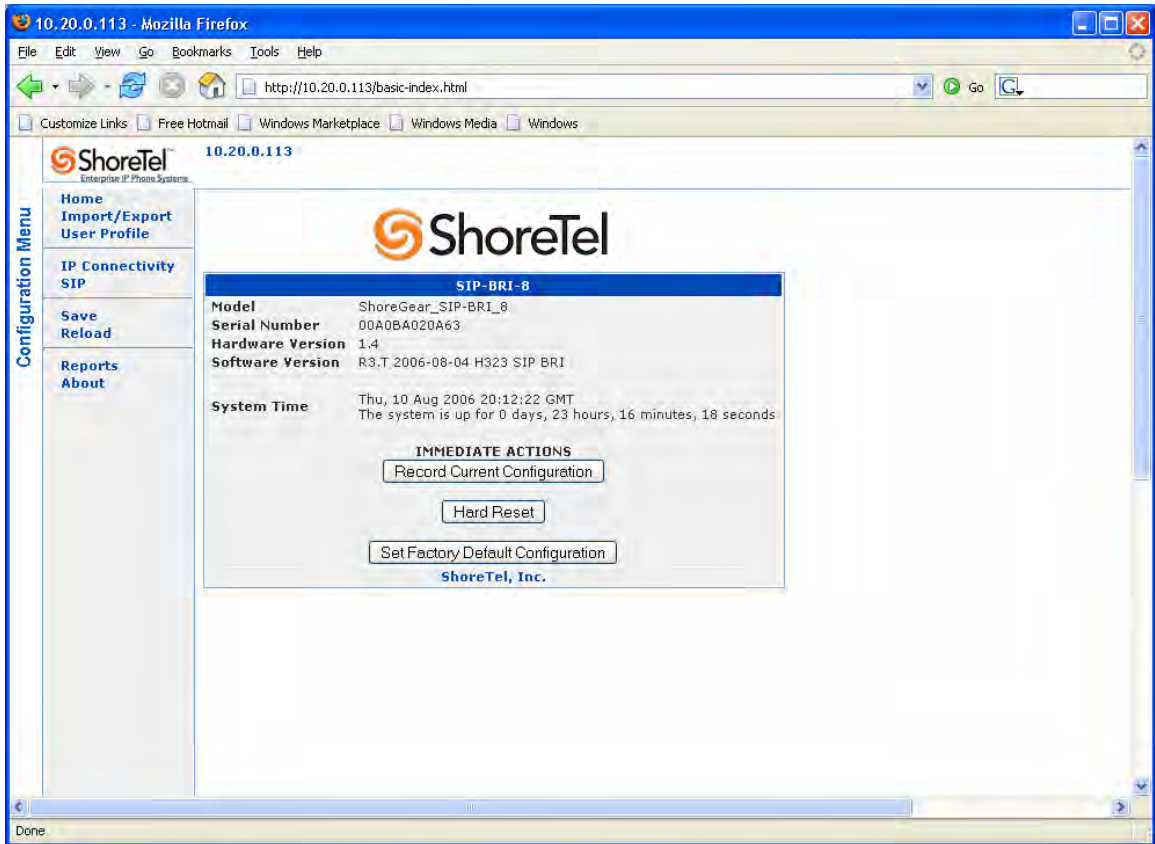
2. The factory default configuration for the Ethernet interface 0/0 is set to DHCP client – An IP Address will be automatically assigned to the ShoreGear SIP-BRI 8 Eth 0/0 by the DHCP server port soon after you've connected it to the Ethernet network.
3. From a PC connected to the same subnet, run the automatic discovery tool available in the tools section of the documentation CD-ROM. The program will automatically identify and list all the ShoreGear SIP-BRI 8 present on this subnet. Simply double click on the ShoreGear you want to configure to access the graphical user interface login screen.

Note: Make sure to disable any LAN or network interface on your notebook that you are not currently using to configure the ShoreGear SIP-BRI 8. The discovery tool will only be broadcasting discovery messages on the first networking interface defined in the Microsoft network connections folder.

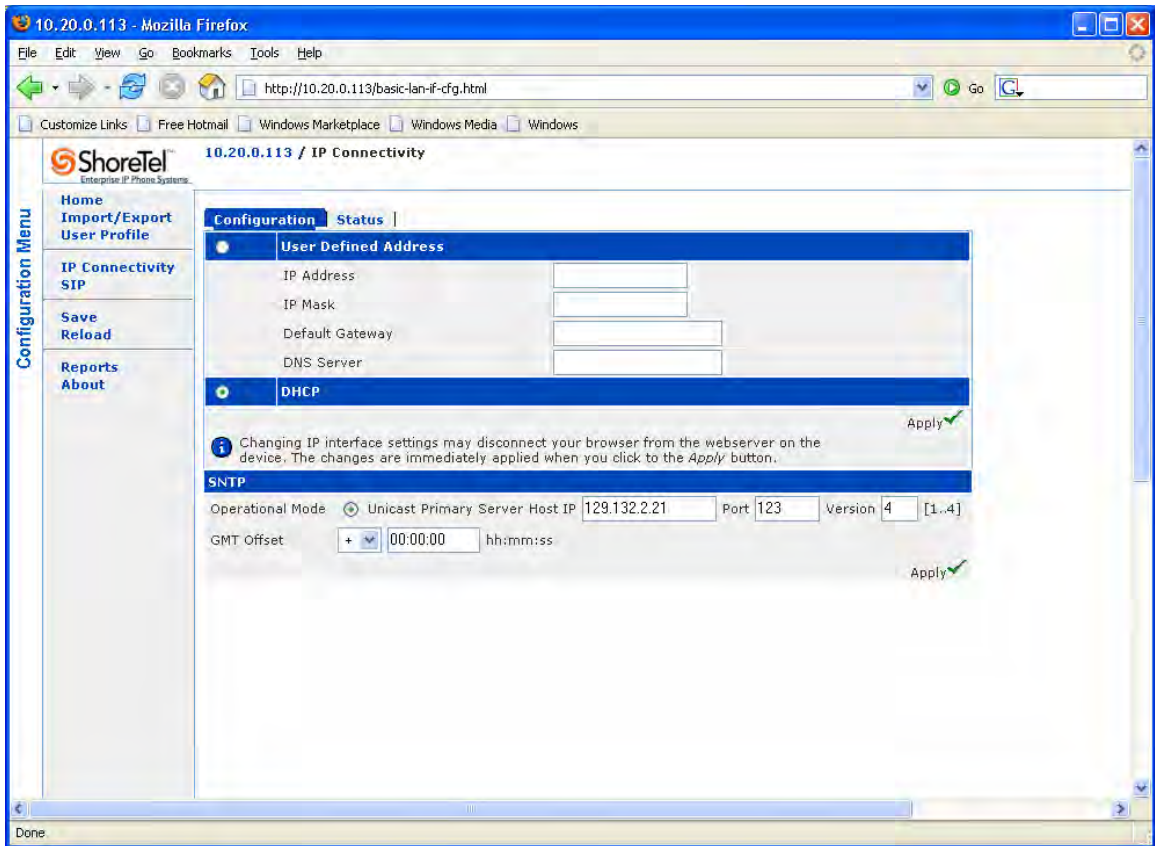


4. Input the default login/password:
Login: **admin**
Password: **changeme**

Note: The default credentials should be changed right away (as suggested by the default settings) for ensuring secure access into the unit. This can be easily done via accessing the User profile menu in the left column of the graphical user interface.

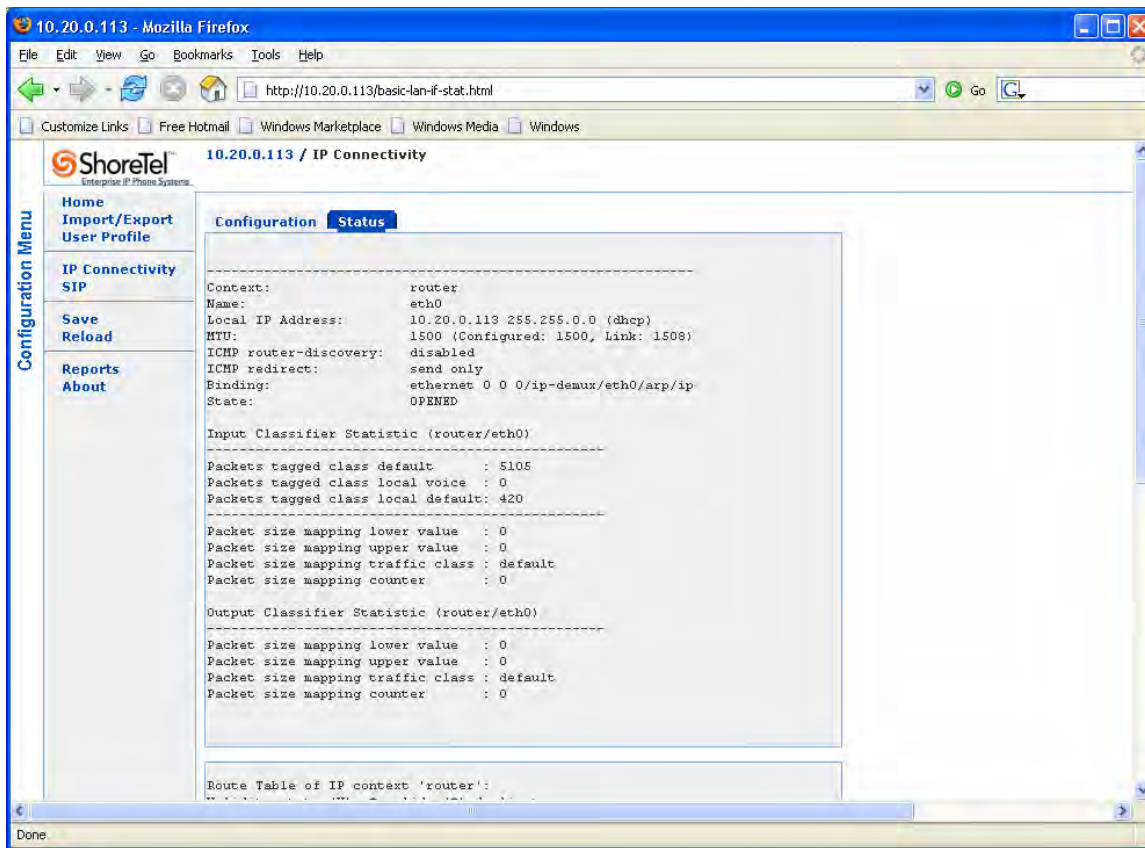


5. Access the "IP CONNECTIVITY" menu on the main page of the graphical user interface. The ShoreGear SIP-BRI 8 will present you with the following screen.



- At this stage, you can decide to either remain into dynamic addressing mode (DHCP) or switch to static assignment and input the IP address, DNS and SNTP servers manually.

IMPORTANT: In case you opt to continue using DHCP, an extra configuration step is required: the lease for the IP address assigned to the ShoreGear SIP-BRI 8 must be made permanent in the DHCP server. In order to identify the IP address currently assigned to the unit, click on the status tab as shown below:

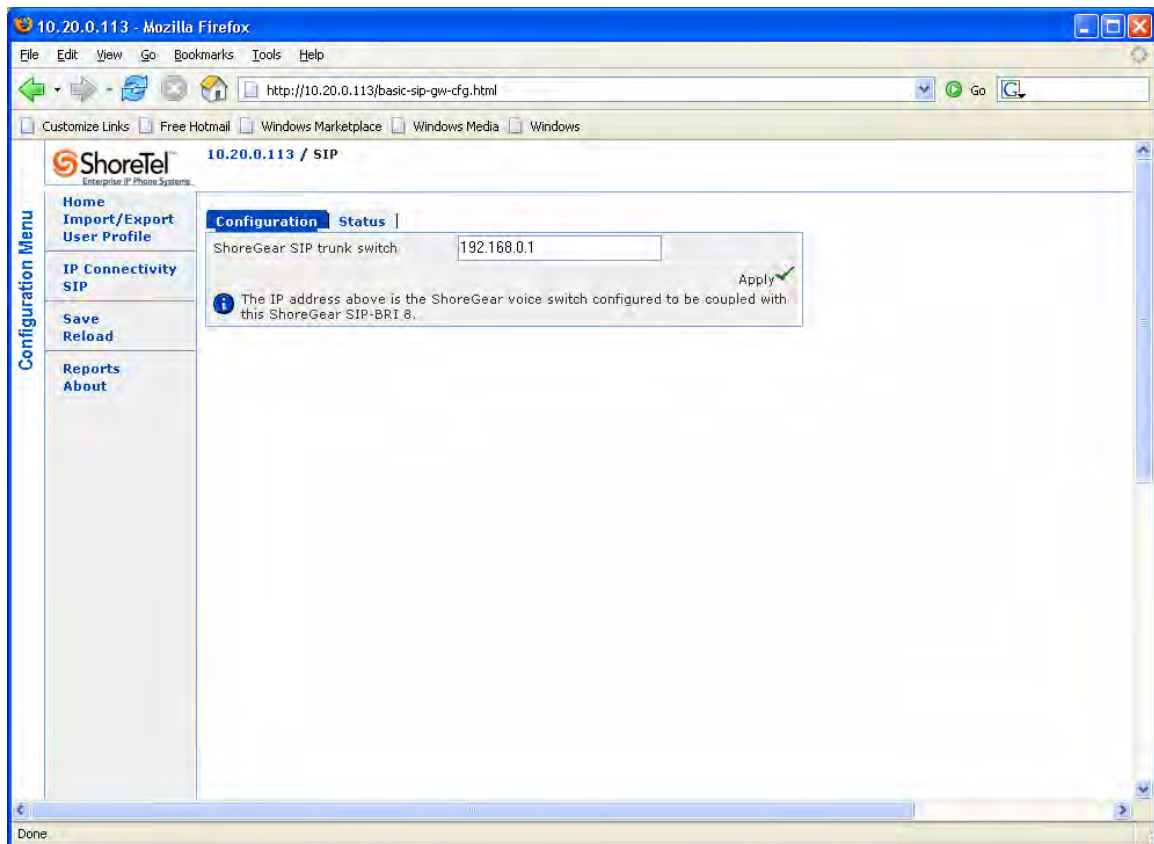


Note: ShoreTel recommends switching to Static IP addressing to simplify configuration, network management tasks and remote access / maintenance.

3.0 Configure the SIP trunk

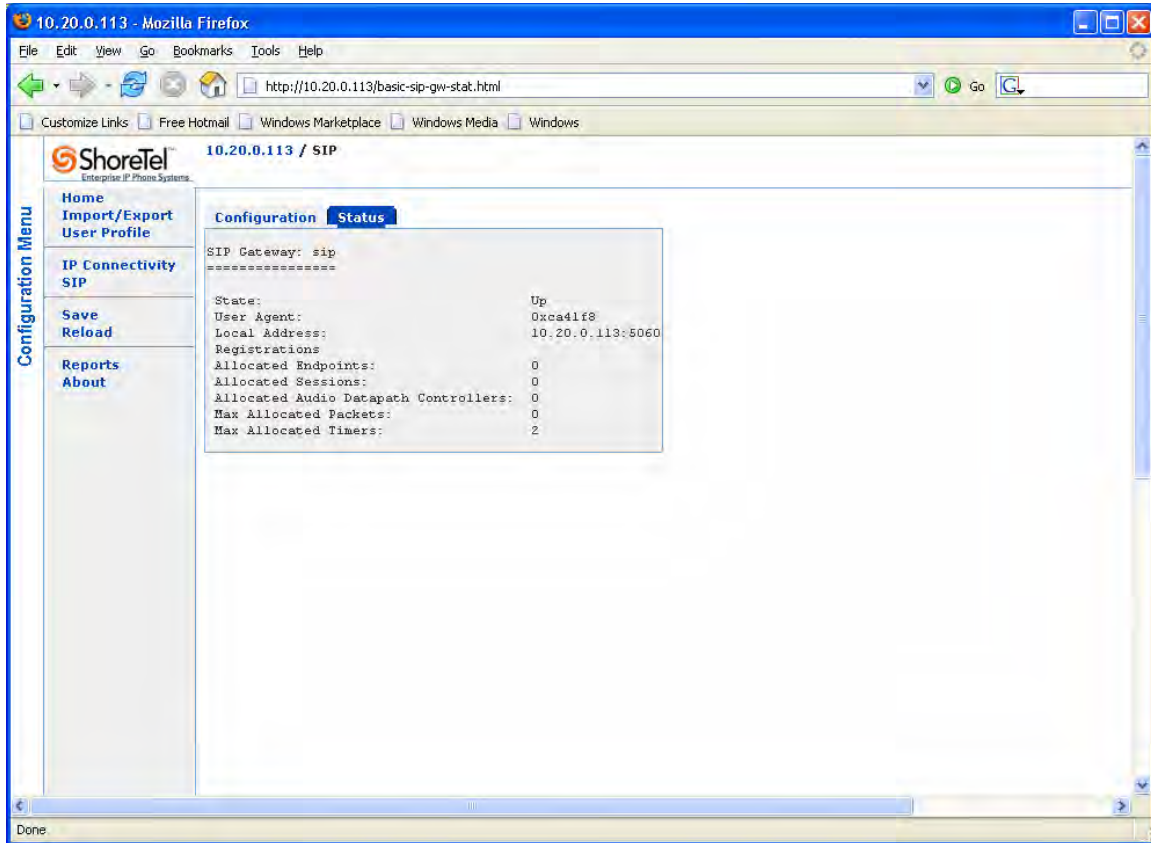
3.1 Configuring the ShoreGear SIP-BRI 8

1. Select the SIP menu on the left column of the system GUI, you should then be presented with the following menu :



2. Input the IP address of the ShoreGear Voice switch in the SIP Server field and click on apply.

3. At this stage, click on the status tab to verify the status of the SIP trunk.



3.2 Configuring the ShoreGear voice switch

1. Input the 8 SIP trunk license purchased and provided with your ShoreGear SIP-BRI 8 unit by clicking on the ShoreWare SIP trunk license.



ShoreGear SIP-BRI 8 is supported as of ShoreTel 6.1 Release 11.13.7100.0 or higher.

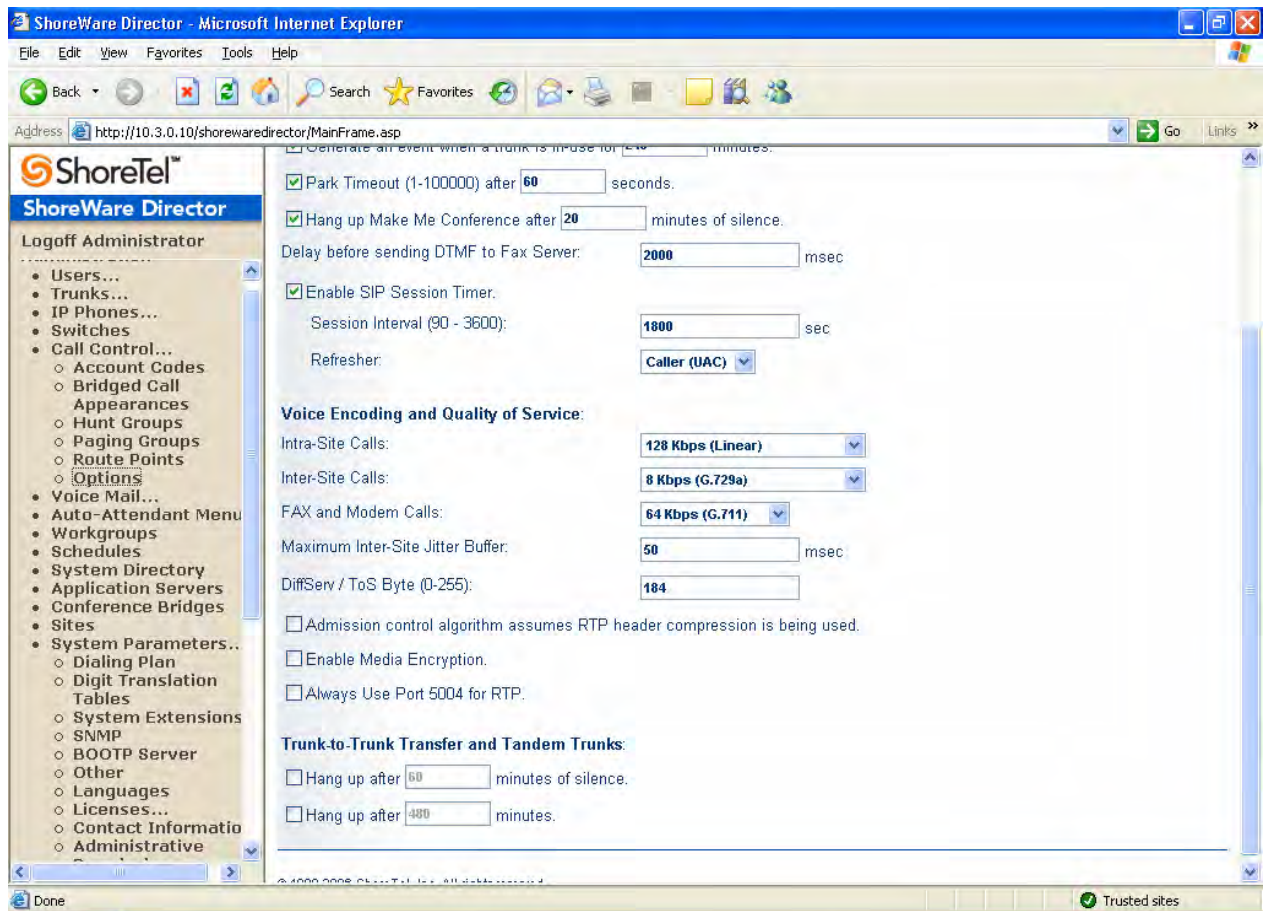
The screenshot shows the ShoreWare Director web interface in Microsoft Internet Explorer. The browser address bar shows <http://10.3.0.10/shorewaredirector/MainFrame.asp>. The page title is "License Requirements" and it includes a "Help" link. Below the title are buttons for "Send/Print" and "Request System License Key".

The main content area contains a table with the following data:

Name	Required	Purchased
Keyed Licenses:		
ShoreWare System License (Enterprise Edition)	1	1
ShoreWare Additional Site License	5	5
ShoreWare Extension License	73	1100
ShoreWare Mailbox License	73	1100
ShoreWare SoftPhone License	9	100
ShoreWare Additional Language License	4	10
Self-audited Licenses:		
ShoreWare Personal Call Manager Software	1	50
ShoreWare Advanced Call Manager Software	62	1000
ShoreWare Operator Call Manager Software	6	1000
ShoreWare Workgroup Agent Call Manager Software	2	1000
ShoreWare Workgroup Supervisor Call Manager Software	4	1000
ShoreWare Application Access Licenses	1	1000
ShoreWare Remote Server Software	1	1000
ShoreWare SIP Trunk License	18	20

At the bottom of the page, there is a copyright notice: © 1998-2006 ShoreTel, Inc. All rights reserved.

- The next immediate step when configuring SIP trunking with a ShoreGear voice switch is to disable the systematic use of the port 5004 for RTP. (SIP negotiates dynamically on a per-call basis). Uncheck the “always Use Port 5004 for RTP” box.



- Then select two ports and assign them as SIP trunks as shown in the screen capture below for port 15 and 16.(the ShoreGear SIP-BRI 8 will only use 8 of the 10 SIP trunks assigned).



You will be prompted to reset your system to enable this change.

ShoreTel Sunnyvale-SG120/24

Port	IP Phones	Conference	SIP Trunks	Description	Jack Number	Location
1 Edit	<input type="checkbox"/>	<input type="checkbox"/>	<input type="checkbox"/>	Venus Williams		197 V1 - Block P
2	<input checked="" type="checkbox"/>	<input type="checkbox"/>	<input type="checkbox"/>	IP Phones		197 V2 - Block P
3 Edit	<input type="checkbox"/>	<input type="checkbox"/>	<input type="checkbox"/>	Brent Petters		198 V1 - Block P
4 Edit	<input type="checkbox"/>	<input type="checkbox"/>	<input type="checkbox"/>	IO Trunk		198 V2 - Block P
5	<input type="checkbox"/>	<input type="checkbox"/>	<input type="checkbox"/>	p55		
6	<input type="checkbox"/>	<input type="checkbox"/>	<input checked="" type="checkbox"/>	SIP Trunks		
7	<input checked="" type="checkbox"/>	<input type="checkbox"/>	<input type="checkbox"/>	p07		
8 Edit	<input type="checkbox"/>	<input type="checkbox"/>	<input type="checkbox"/>	George HW Bush		
9	<input type="checkbox"/>	<input type="checkbox"/>	<input type="checkbox"/>	Conf Port		
10	<input type="checkbox"/>	<input checked="" type="checkbox"/>	<input type="checkbox"/>	Conf Port		
11	<input type="checkbox"/>	<input checked="" type="checkbox"/>	<input type="checkbox"/>	Conf Port		
12	<input type="checkbox"/>	<input checked="" type="checkbox"/>	<input type="checkbox"/>	Conf Port		
13	<input type="checkbox"/>	<input checked="" type="checkbox"/>	<input type="checkbox"/>	Conf Port		
14	<input type="checkbox"/>	<input checked="" type="checkbox"/>	<input type="checkbox"/>	Conf Port		
15	<input type="checkbox"/>	<input type="checkbox"/>	<input checked="" type="checkbox"/>	SIP Trunks		
16	<input type="checkbox"/>	<input type="checkbox"/>	<input checked="" type="checkbox"/>	SIP Trunks		

- We have created SIP trunks ready to be used by the system and we can now assign these trunks to a trunk group so it can be pointed at the IP address of the ShoreGear SIP-BRI 8. The following screens describe the two-step process:

* Creation of a SIP trunk group (same as a regular trunk group)

ShoreWare Director - Microsoft Internet Explorer

Address: http://10.3.0.10/shorewaredirector/MainFrame.asp

ShoreTel™
ShoreWare Director
Logoff Administrator

Administration

- Users...
- Trunks...
 - Individual Trunks
 - Trunk Groups
 - Local Prefixes
- IP Phones...
- Switches
- Call Control...
 - Account Codes
 - Bridged Call Appearances
 - Hunt Groups
 - Paging Groups
 - Route Points
 - Options
- Voice Mail...
- Auto-Attendant Menu
- Workgroups
- Schedules
- System Directory
- Application Servers
- Conference Bridges
- Sites
- System Parameters...
 - Dialing Plan
 - Digit Translation Tables
 - System Extensions
 - SNMP
 - SCCTP...

Trunk Groups [Help](#)

Add new trunk group at site: **Sunnyvale HQ** of type: **SIP** [Go](#)

Name	Type	Site	Trunks	DID	Destination	Access Code
Analog Loop Start	Analog Loop Start	Sunnyvale HQ	0	No	5700	9
Belgium Tie	PRI	Belgium	0	Yes	5700	8
Demo-Corp Tie	PRI	Sunnyvale HQ	23	Yes	5700	9
Digital Loop Start	Digital Loop Start	Sunnyvale HQ	0	No	5700	9
Digital Wink Start	Digital Wink Start	Sunnyvale HQ	0	Yes	5700	9
IO Trunk Group	Analog DID	Sunnyvale HQ	1	Yes	5700	-
SF PRI	PRI	SF - Remote Site	0	Yes	5700	9
SIP Trunk	SIP	New York - Remote Site	5	Yes	5700	9
SV HQ SIP Trunks	SIP	Sunnyvale HQ	5	No	5700	9
test PRI delete 7/7	PRI	Sunnyvale HQ	0	Yes	5700	9

© 1998-2006 ShoreTel, Inc. All rights reserved.

javascript: gotoAdd(); Trusted sites

ShoreWare Director - Microsoft Internet Explorer

Address: http://10.3.0.10/shorewaredirector/MainFrame.asp

ShoreTel™
ShoreWare Director
Logoff Administrator

Administration

- Users...
- Trunks...
 - Individual Trunks
 - Trunk Groups
 - Local Prefixes
- IP Phones...
- Switches
- Call Control...
 - Account Codes
 - Bridged Call Appearances
 - Hunt Groups
 - Paging Groups
 - Route Points
 - Options
- Voice Mail...
- Auto-Attendant Menu
- Workgroups
- Schedules
- System Directory
- Application Servers
- Conference Bridges
- Sites
- System Parameters...
 - Dialing Plan
 - Digit Translation Tables
 - System Extensions
 - SNMP
 - SCCTP...

Trunk Groups [Help](#)

Edit SIP Trunk Group

[New](#) [Copy](#) [Save](#) [Delete](#) [Reset](#)

[Edit this record](#) [Refresh this page](#)

Name:

Site:

Language:

Teleworkers

Enable SIP Info for G.711 DTMF Signaling

Enable Digest Authentication

User ID:

Password:

Inbound:

Number of Digits from CO:

DNIS [Edit DNIS Map](#)

DID [Edit DID Range](#)

Extension

Translation Table:

Prepend Dial In Prefix:

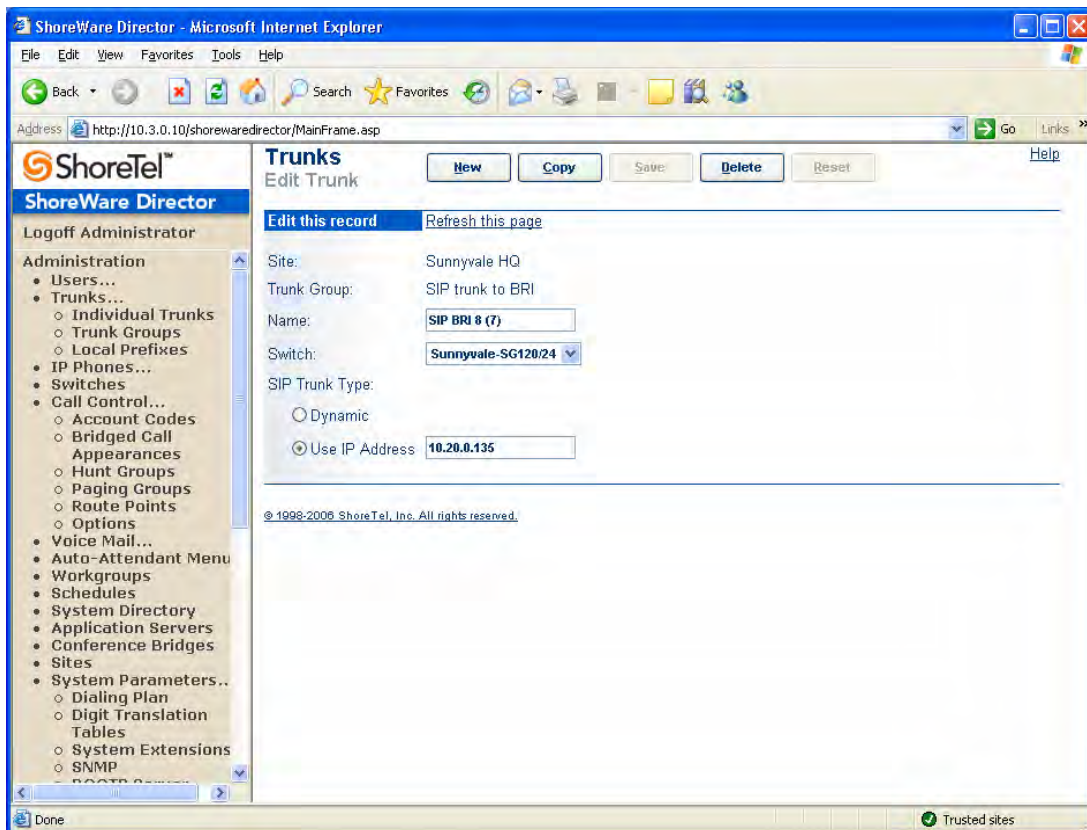
Use Site Extension Prefix

Tandem Trunking

Done Trusted sites

Note: Make sure you select to “enable SIP info for G711 DTMF signaling.”

* Editing the trunk from the trunk group previously created and input in Use IP address field the IP address of the ShoreGear SIP-BRI 8 as shown in the example below. By saving the configuration for the first trunk, the seven other will automatically be populated.




Note: You can easily verify the setup of the created trunk group and trunks by accessing the individual trunks menu once again.

ShoreWare Director - Microsoft Internet Explorer

File Edit View Favorites Tools Help

Back Forward Stop Refresh Home Search Favorites

Address http://10.3.0.10/shorewaredirector/MainFrame.asp Go Links



ShoreWare Director

Logoff Administrator

Administration

- Users...
 - Individual Users
 - User Groups
 - Class of Service
 - Notify Users
 - Anonymous
 - Telephones
 - Extension Lists
 - Batch Update Utilit
 - Call Handling Mode Defaults...
- Trunks...
 - Individual Trunks
 - Trunk Groups
 - Local Prefixes
- IP Phones...
- Switches
- Call Control...
 - Account Codes
 - Bridged Call Appearances
 - Hunt Groups
 - Paging Groups
 - Route Points
 - Options
- Voice Mail...
- Auto-Attendant Menu
- Workgroups
- Schedules

Demo-Corp Tie (4)	Demo-Corp Tie	PRI	Sunnyvale HQ	Sunnyvale-SGT1	4
Demo-Corp Tie (5)	Demo-Corp Tie	PRI	Sunnyvale HQ	Sunnyvale-SGT1	5
Demo-Corp Tie (6)	Demo-Corp Tie	PRI	Sunnyvale HQ	Sunnyvale-SGT1	6
Demo-Corp Tie (7)	Demo-Corp Tie	PRI	Sunnyvale HQ	Sunnyvale-SGT1	7
Demo-Corp Tie (8)	Demo-Corp Tie	PRI	Sunnyvale HQ	Sunnyvale-SGT1	8
Demo-Corp Tie (9)	Demo-Corp Tie	PRI	Sunnyvale HQ	Sunnyvale-SGT1	9
IO Trunk	IO Trunk Group	Analog DID	Sunnyvale HQ	Sunnyvale-SG120/24	4
SIP 3000 - 3004	SV HQ SIP Trunks	SIP	Sunnyvale HQ	Sunnyvale-SG120/24	0 0.0.0.0
SIP 3000 - 3004 (1)	SV HQ SIP Trunks	SIP	Sunnyvale HQ	Sunnyvale-SG120/24	0 0.0.0.0
SIP 3000 - 3004 (2)	SV HQ SIP Trunks	SIP	Sunnyvale HQ	Sunnyvale-SG120/24	0 0.0.0.0
SIP 3000 - 3004 (3)	SV HQ SIP Trunks	SIP	Sunnyvale HQ	Sunnyvale-SG120/24	0 0.0.0.0
SIP 3000 - 3004 (4)	SV HQ SIP Trunks	SIP	Sunnyvale HQ	Sunnyvale-SG120/24	0 0.0.0.0
SIP 4000 - 4005	SIP Trunk	SIP	New York - Remote Site	SF-SG40/8	0 0.0.0.0
SIP 4000 - 4005 (1)	SIP Trunk	SIP	New York - Remote Site	SF-SG40/8	0 0.0.0.0
SIP 4000 - 4005 (2)	SIP Trunk	SIP	New York - Remote Site	SF-SG40/8	0 0.0.0.0
SIP 4000 - 4005 (3)	SIP Trunk	SIP	New York - Remote Site	SF-SG40/8	0 0.0.0.0
SIP 4000 - 4005 (4)	SIP Trunk	SIP	New York - Remote Site	SF-SG40/8	0 0.0.0.0
SIP BRI 8	SIP trunk to BRI	SIP	Sunnyvale HQ	Sunnyvale-SG120/24	0 10.20.0.135
SIP BRI 8 (1)	SIP trunk to BRI	SIP	Sunnyvale HQ	Sunnyvale-SG120/24	0 10.20.0.135
SIP BRI 8 (2)	SIP trunk to BRI	SIP	Sunnyvale HQ	Sunnyvale-SG120/24	0 10.20.0.135
SIP BRI 8 (3)	SIP trunk to BRI	SIP	Sunnyvale HQ	Sunnyvale-SG120/24	0 10.20.0.135
SIP BRI 8 (4)	SIP trunk to BRI	SIP	Sunnyvale HQ	Sunnyvale-SG120/24	0 10.20.0.135
SIP BRI 8 (5)	SIP trunk to BRI	SIP	Sunnyvale HQ	Sunnyvale-SG120/24	0 10.20.0.135
SIP BRI 8 (6)	SIP trunk to BRI	SIP	Sunnyvale HQ	Sunnyvale-SG120/24	0 10.20.0.135
SIP BRI 8 (7)	SIP trunk to BRI	SIP	Sunnyvale HQ	Sunnyvale-SG120/24	0 10.20.0.135

© 1998-2006 ShoreTel, Inc. All rights reserved.

Trusted sites

4.0 Configure the BRI trunks

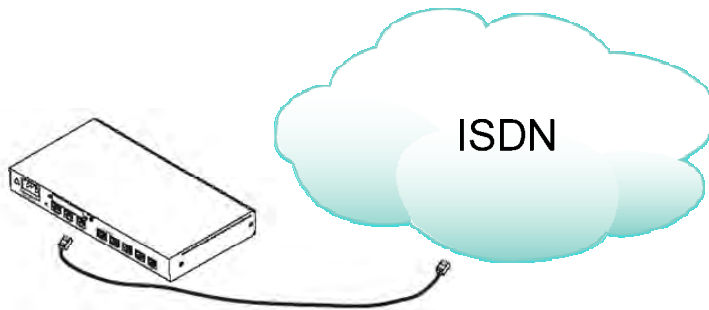
The ISDN ports, BRI 1 thru 4, are connected to an ISDN NT (Network terminator) using cables terminated with RJ-45 connectors. Use straight-through cables to connect to the S/T port of your NT or phones/PBX.



When ordering the BRI links from the trunk provider, make sure Point to Point connections are requested.

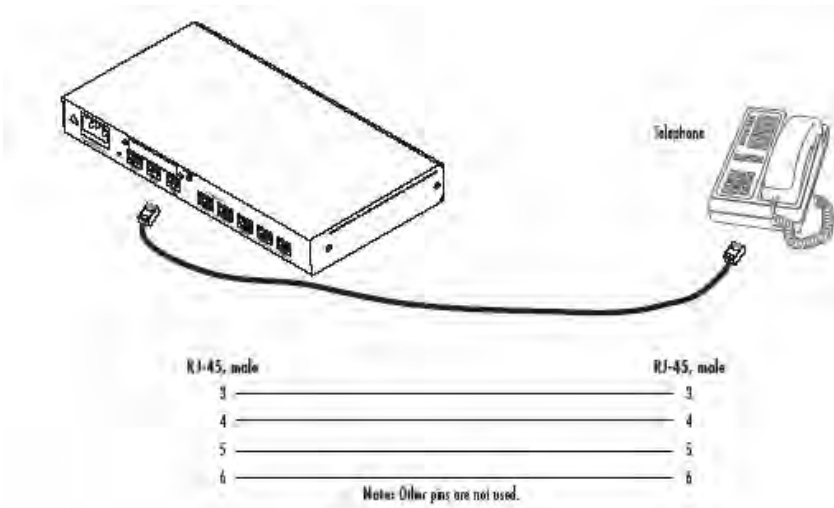


*Connecting an ISDN device
The interconnecting cables shall be acceptable for external use and shall be rated for the proper application with respect to voltage, current, anticipated temperature, flammability, and mechanical serviceability.*



Pin	Signal
3	Rx+
4	Tx+
5	Tx-
6	Rx-

The ISDN port BRI 0 is only to be used for connecting an ISDN phone (Euro-isdn certified) - This port is disabled by default but will become active in a power failure situation. Indeed during power failure, the relay open in normal operation mode will then close connecting physically all pins between the port BRI 0/0 and the port BRI 0/1.



Fallback relay operation:

When the unit is not powered, the fallback relay connects pins 3, 4, 5, and 6 of the net and the user ports (fallback) together. This enables you to place calls to the PSTN even if the unit is powered down.

ISDN BRI O/O (NT/Net or TE/User) port

The BRI phone port uses an 8-pin RJ-45 connector.

RJ-45 socket	
Pin	Signal
3	B+
4	B-
5	A-
6	A+

5.0 Final step : remote maintenance setup

Preparation:

Copy from your ShoreGear SIP-BRI 8 documentation CD-ROM, the discovery tool on the desktop of ShoreWare Director – the Server must be located on the same subnet as your new ShoreGear for the discovery tool to automatically recognize the unit (ShoreTel discovery tool uses layer 2 broadcast to locate the ShoreGear Sip-BRI 8)

Note: you can also run the tool from the CD-ROM – copying on the ShoreWare Director desktop makes it easier for ShoreTel support engineers to later access the ShoreGear SIP-BRI 8 for maintenance/support purposes – would Director and the SIP-BRI 8 not on the same subnet, ShoreTel recommends to create a link to access the device on ShoreWare Director desktop, directly pointing to the ShoreGear SIP-BRI 8 GUI URL.

6.0 Additional Information

Refer to the ShoreGear Software Configuration Guide located on the CD-ROM shipped with your ShoreGear device and available online on the ShoreTel partner's web site for detailed information about:

- Installing, configuring, operating, and troubleshooting.
- Warranty, trademark and compliance

The CD-ROM also includes freeware and shareware tools, including TFTP servers, and Telnet clients.

A.0 Customer and Technical Support

Toll-Free support in the United States: call Technical Assistance Center at +1 (800) 742-2348

International: call Technical Assistance Center at + (408) 331-3313

Online support: <http://support.shoretel.com/>

B.0 Compliance Information

B.1 Compliance

EMC Compliance:

- FCC Part 15, Class A
- EN55022, Class A
- EN55024

Safety Compliance:

- UL60950-1/CSA C22.2 No. 60950-1
- IEC/EN 60950-1
- AS/NZS 60950-1

PSTN Regulatory Compliance:

- TBR3
- AS/ACIF S031

B.2 Radio and TV interference

The ShoreGear SIP-BRI 8 router generates and uses radio frequency energy, and if not installed and used properly—that is, in strict accordance with the manufacturer's instructions—may cause interference to radio and television reception. The ShoreGear SIP-BRI 8 has been tested and found to comply with the limits for a Class A computing device in accordance with specifications in Subpart B of Part 15 of FCC rules, which are designed to provide reasonable protection from such interference in a commercial installation. However, there is no guarantee that interference will not occur in a particular installation. If the ShoreGear SIP-BRI 8 does cause interference to radio or television reception, which can be determined by disconnecting the unit, the user is encouraged to try to correct the interference by one or more of the following measures: moving the computing equipment away from the receiver, re-orienting the receiving antenna and/or plugging the receiving equipment into a different AC outlet (such that the computing equipment and receiver are on different branches).

B.3 ISDN compliance

This device is approved for connection to the public ISDN telecommunication network in the CE zone.

B.4 EC Declaration of Conformity

(See section B.5 "EG-Konformitätserklärung" for German version.)

Product Description: ShoreGear SIP-BRI 8

This equipment conforms to the requirements of Council Directive 1999/5/EC on the approximation of the laws of the member states relating to Radio and Telecommunication Terminal Equipment and the mutual recognition of their conformity.

The signed Declaration of Conformity can be downloaded upon request.

B.5 EG-Konformitätserklärung

(See section B.4 "EC Declaration of Conformity" for English version)

Produktbezeichnung: ShoreGear SIP-BRI 8

Die bezeichneten Produkte stimmen in der von uns in Verkehr gebrachten Ausführung mit den Vorschriften folgender Richtlinie überein: R&TTE 1999/5/EG Richtlinie des europäischen Parlaments und des Rates zur Angleichung der Rechtsvorschriften der Mitgliedstaaten über Funkanlagen und Telekommunikations-Endeinrichtungen und die gegenseitige Anerkennung ihrer Konformität.

B.6 Zulassung

Zugelassen für die Anschaltung an das öffentliche ISDN Telekommunikationsnetz an BRI/S0-ISDN Schnittstellen.

When this device is used in North America, it shall be connected to a Network Termination Device and not connected directly to an outside POTS line.

The safety advice in the documentation accompanying the products shall be obeyed.

The conformity to the above directive is indicated by the CE sign on the device.

Die Sicherheitshinweise in der mitgelieferten Produktdokumentation sind zu beachten.

Die Konformität mit der oben erwähnten Richtlinie wird durch das CE-Zeichen auf dem